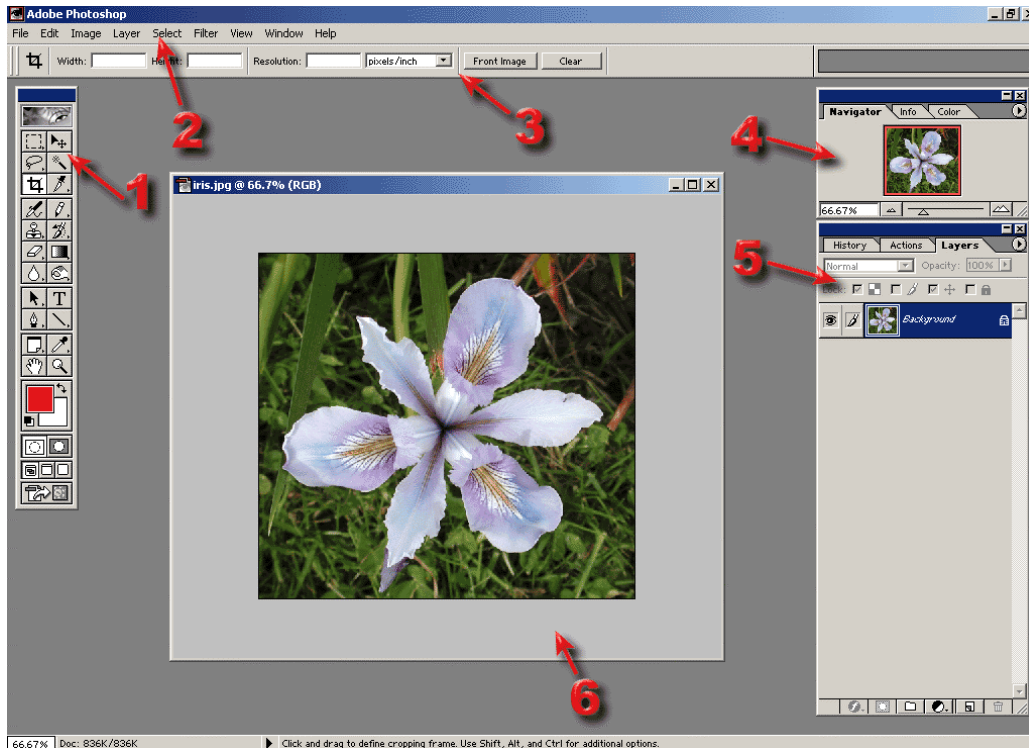


PHOTOSHOP 7.0 INTERMEDIATE

Eraser, clone stamp, pattern stamp, healing brush,
patch tool, filters, and certain adjustments



Workspace:



- 1 Toolbox**, full of selection tools, brushes, erasers, and other tools
- 2 Menu Bar** with several layers of drop down menus & dialogues
- 3 Option Bar** are context sensitive and allow customization of tools
- 4 Navigator/Info/Color Palette** palettes allows zooming in and out, shows information about the cursor point and selection of colors
- 5 History/Actions/Layers** palettes allow multiple backward steps, automation of tasks and manipulation of layers
- 6 Image Window** window contains your image

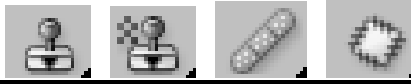
Eraser tool: found on the **TOOLBOX**

Used to take away areas of an image on the selected layer

To erase:

- click on the **ERASER** tool on the **TOOLBOX**
- click on the layer you want to edit
- on the option bar, choose the brush size and type you want
- on the option bar, choose a level of opacity
- start erasing areas of the image

Fixing tools: found on the **TOOLBOX**



Used to select areas of the image



Clone Stamp – to clean up small flaws and erase elements in your image

- click on the **CLONE STAMP** tool on the **TOOLBOX**
- on the option bar, choose the brush size and type you want
- on the option bar, choose a level of opacity
- press and hold the **OPTION** key and click the area of the image from which you want to copy
- click on the area you want to fix



Pattern Stamp – to paint a pattern on an image in a free form way

- click on the **PATTERN STAMP** tool on the **TOOLBOX**
- on the option bar, choose the brush size and type you want
- on the option bar, choose the pattern you want
- on the option bar, choose a level of opacity
- click and drag on the area you want to add the pattern



Healing Brush – to correct defect, similar to the clone stamp, but takes into account the texture and lighting of the image

- click on the **HEALING BRUSH** tool on the **TOOLBOX**
- on the option bar, choose the brush size and settings you want
- make sure **SAMPLED** is selected
- press and hold the **OPTION** key and click the area of the image from which you want to copy
- click and drag on the area you want to apply the healing tool



Patch Tool – lets you fix an area by dragging it to an unflawed area of the image

- click on the **PATCH** tool on the **TOOLBOX**
- click and drag to select the part of the image that you want to fix, like the **LASSO** tool
- click inside the selection and drag it to an area that does not have defects

ADJUSTMENTS

Adjusting Brightness and Contrast

- select an area of the image
- Click **IMAGE** -> **ADJUSTMENTS** -> **BRIGHTNESS/CONTRAST** on the menu bar
- pop up box appears, slide values above or below 0

Adjusting Hue and Saturation

- select an area of the image
- Click **IMAGE** -> **ADJUSTMENTS** -> **HUE/SATURATION** on the menu bar
- pop up box appears, slide values above or below 0

Adjusting Color Balance

- select an area of the image
- Click **IMAGE** -> **ADJUSTMENTS** -> **COLOR BALANCE** on the menu bar
- choose **SHADOWS**, **MIDTONES**, or **HIGHLIGHTS**
- pop up box appears, slide values above or below 0

FILTERS

Filters help to add artistic and visual effects to your images or selections in your images. The best way to learn about them is to experiment with different ones. Remember you can use your HISTORY PALETTE to always go back one or more steps.

To APPLY A FILTER

- make a selection with a selection tool
- click **FILTER** -> **then choose from the first menu** -> **choose from the second menu**
- filter will apply. If you do not like the result, use the UNDO command or the **HISTORY PALETTE** to go back one or more steps

ADDITIONAL INFORMATION

1. It is good practice to save after every few commands. This way if the computer freezes, you will not have lost your work.
2. While scanning images, it is better to save them as .JPEG images
3. While working in PhotoShop, it is better to save files as .PSD or .TIFF images. These are the only two file formats that will save your layers individually
4. If you want to experiment with an idea, but want to be able to go back to your original image, save the files under different names
5. You should always include your last name in your file names. Example: SMITHlandscape or SMITHlandscape2. For final images, label them SMITHlandscapeFINAL